

PLOTWORKS®

Intelligent Folding for the HP Designjet T7100

Powering Your Work Flow

The new HP Designjet T7100 and PLP Digital Systems' PlotWorks have the power to break through speed barriers, cost concerns, and folding bottlenecks. With PlotWorks integrated print and fold capabilities, you can lower your labor costs while powering your work flow.

With integrated folding capabilities, PlotWorks users can:

- Significantly reduce expensive labor and handling costs
- Utilize unattended online folding for all standard fold packages
- Print and fold at rated printer speed
- Block unsuitable media, preventing costly damage

PlotWorks Speeds Productivity

Realize a true end-to-end solution and increase productivity with:

- Batch printing and folding for unattended output
- Direct-from-Windows printing provides integrated work flow
- WYSIWYG preflight to prevent errors and offer precise control, scaling and sizing
- Automatic jam recovery to reduce errors

Folding Modes Matter

Offline

- Hand-fed sheets slow productivity
- Labor intensive – costs money and time

Inline

- Requires attended operation
- Jam recovery is difficult and labor intensive
- Manual image rotation takes time

Online with PlotWorks

- Unattended operation from print to fold
- Easy to use
- Unparalleled performance
- Automated rotation and jam recovery
- Fastest path to finished output

HP Designjet T7100 with PlotWorks



Do Folded Documents Slow You Down?

PlotWorks is the only software to offer a complete solution for companies requiring automated print and fold work flows. Its integrated online folding capabilities remove expensive offline and inline folding problems while automating from Print to Fold.



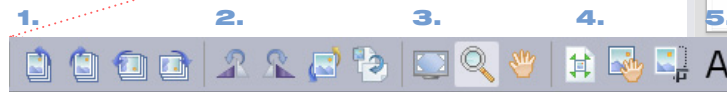
PLP Digital Systems is an HP Gold Partner. PLP has served wide format printing globally for over 20 years. www.plp.com/hp

Automated Finishing With PlotWorks

Save time, making large format print output productive

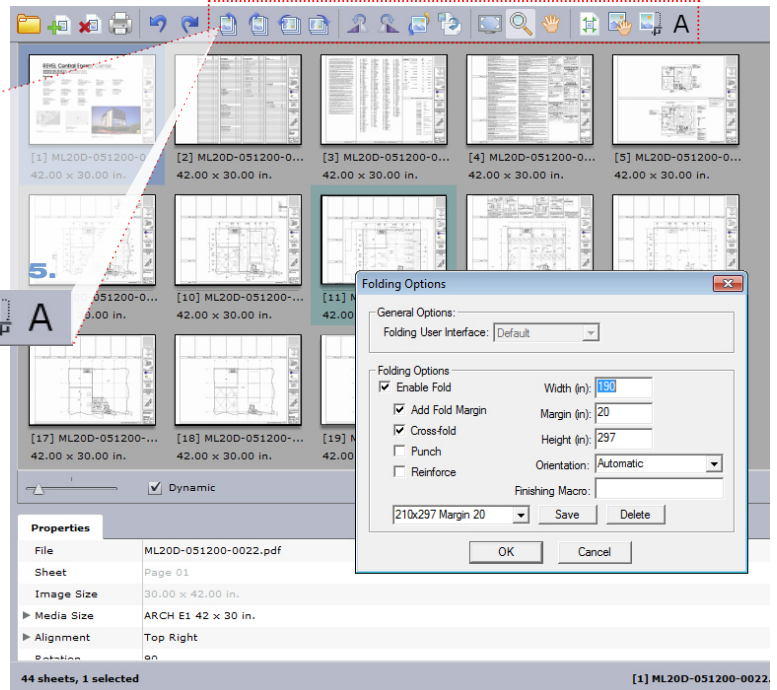
Decrease Production Time with:

- Guided user controls
- Intuitive media handling
- Auto-rotation for quick positioning
- Support for custom fold packages
- WYSIWYG preflight control



Easy to Follow User Interface

1. Single click page orientation
2. Single click image rotation
3. Set to window, zoom, pan
4. Easy page cropping
5. WYSIWYG labeling



PlotWorks Specifications

Compatible Folders	estefold 4211-HP (es-te Folding Systems GmbH) bayCompact (O. Bay AG)
Server	Customer must provide dedicated workstation for PlotWorks Server. Operating system: Windows 7 or Windows XP (32- or 64-bit) CPU: Quad-core or better Memory: 4 GB or better Ports: 1 USB port for hardware license key, 1 serial port for folder communication
Client	The PlotWorks Client may be installed on an unlimited number of customer-provided workstations. Hardware license key is not required. Operating system: Windows 7 or Windows XP (32- or 64-bit) CPU: Quad-core or better Memory: 4 GB or better
Speed/throughput	Rated printer speeds; all fold types
Folding programs	Supports all available options for compatible folders